

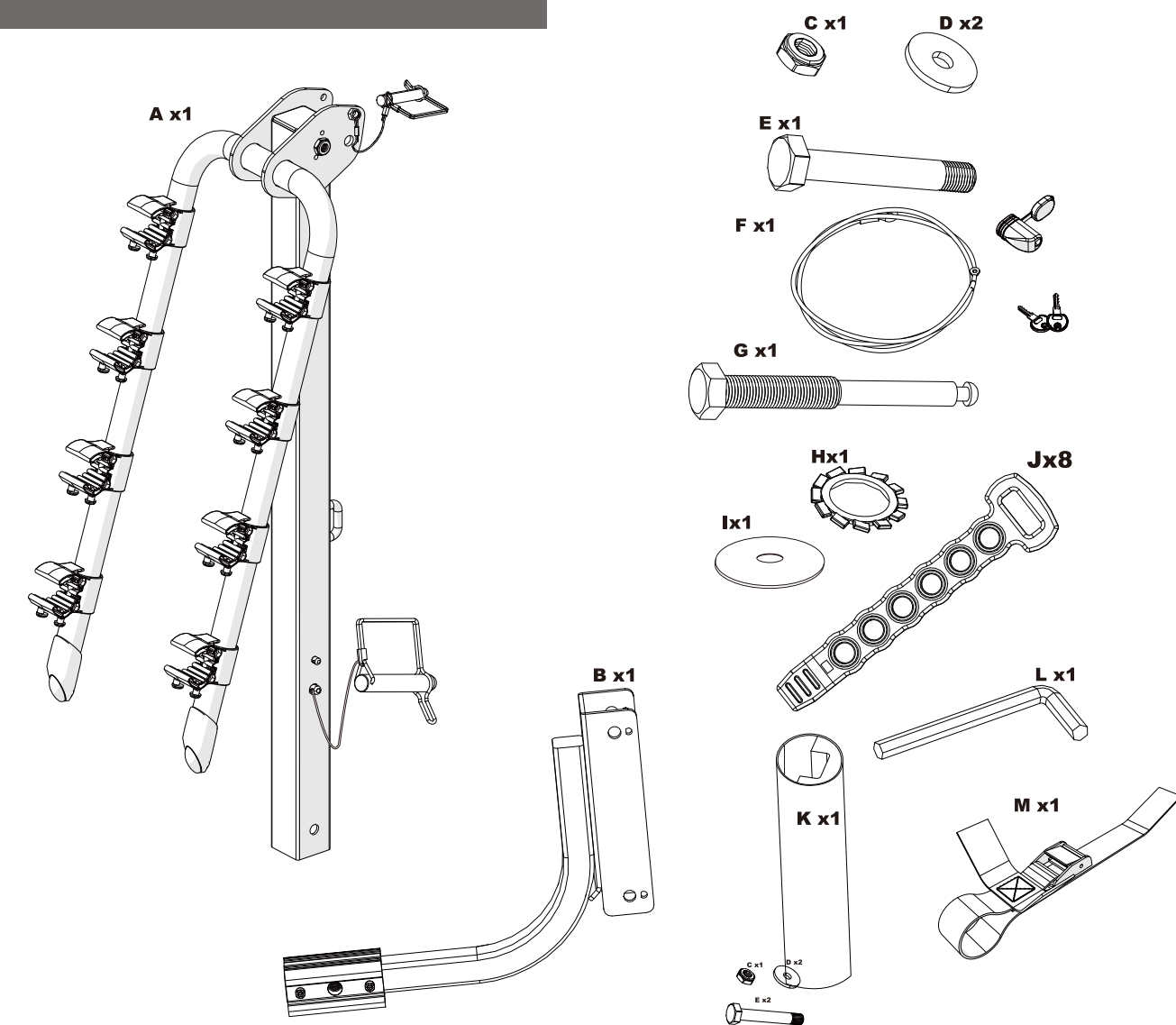
INSTRUCTION

HITCH RACK

Premium hitch mount bike rack
Model: VZ-F13-002

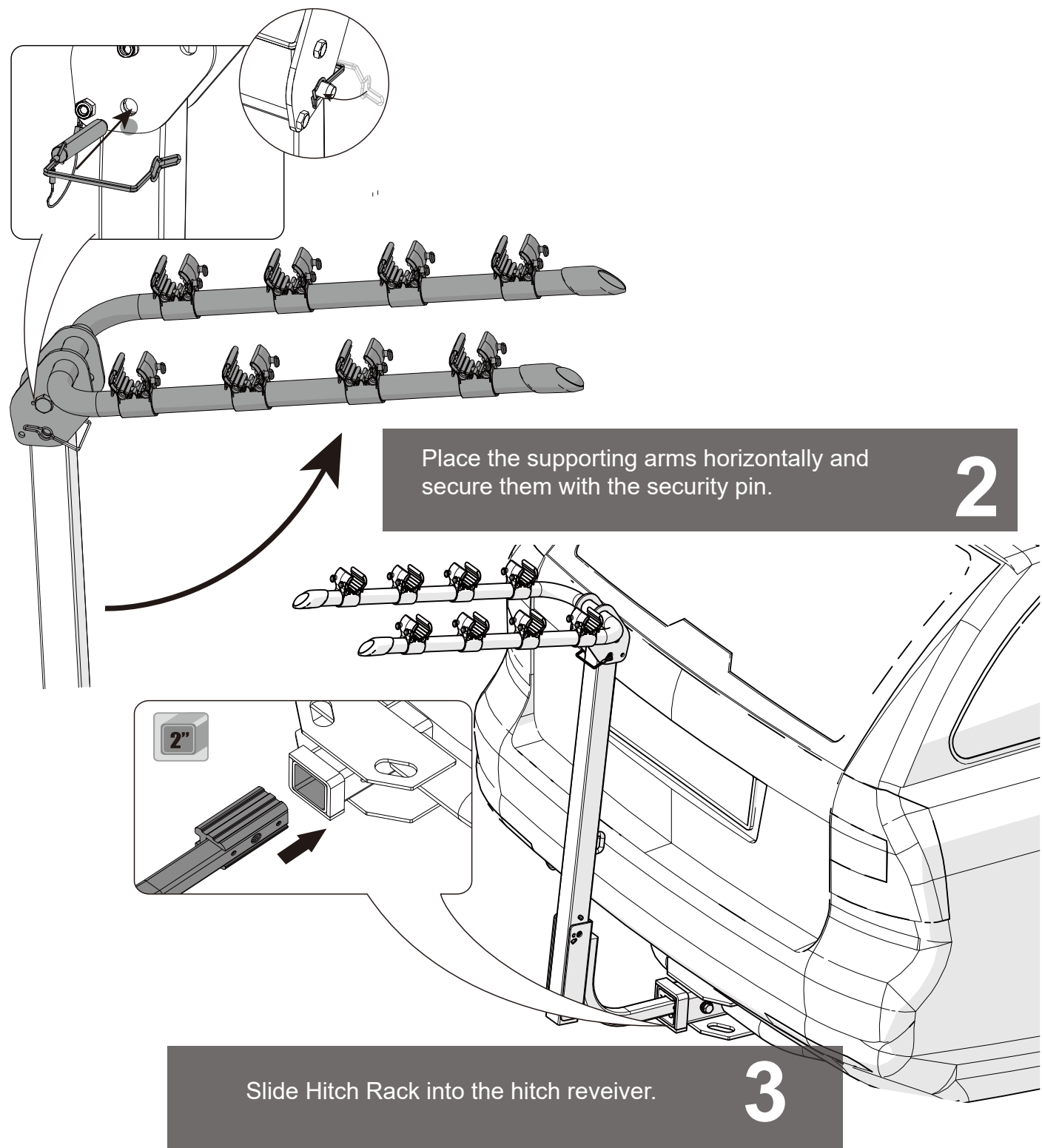
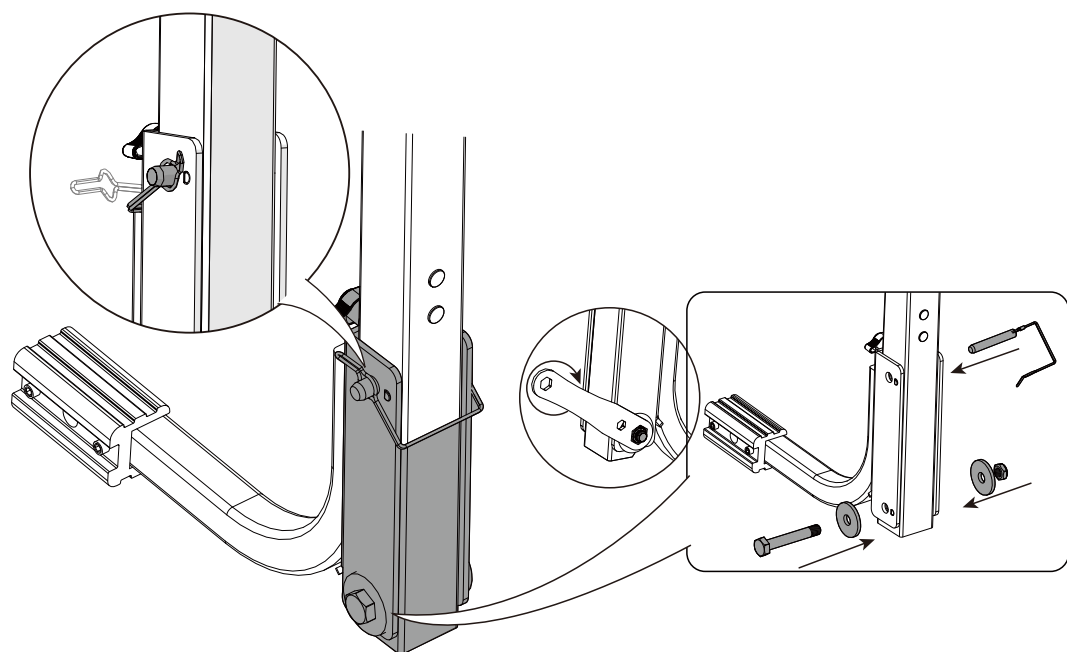


Thank you for purchase VENZO Rack.
Please check if all parts are included.



Connect the hitch base to the main frame of Hitch rack using the screw and nut in the lower hole and the security pin in the upper hole of the base.

1

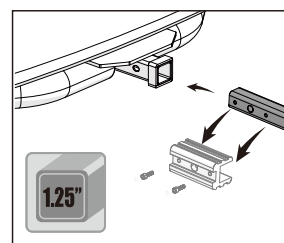


Place the supporting arms horizontally and secure them with the security pin.

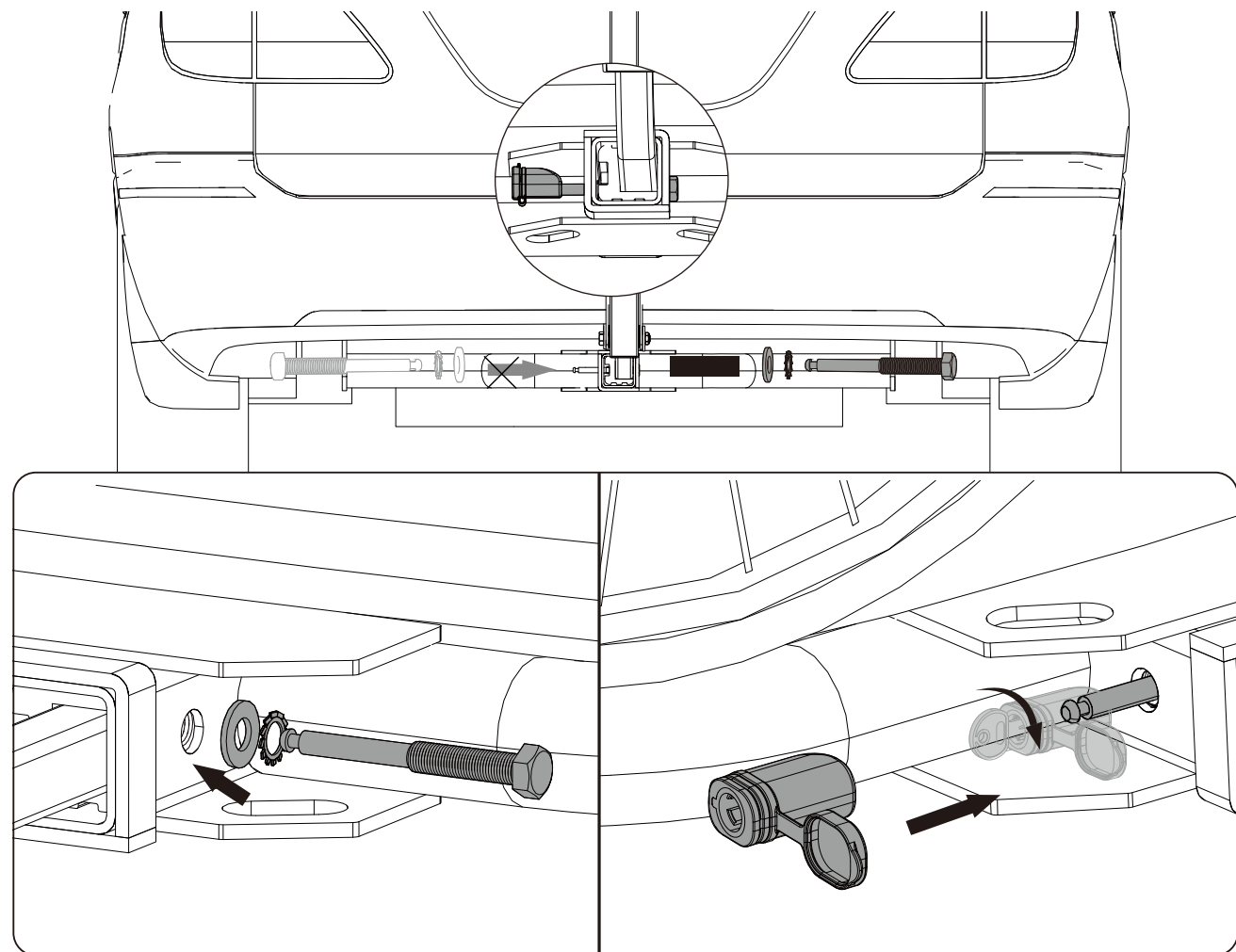
2

Slide Hitch Rack into the hitch receiver.

3

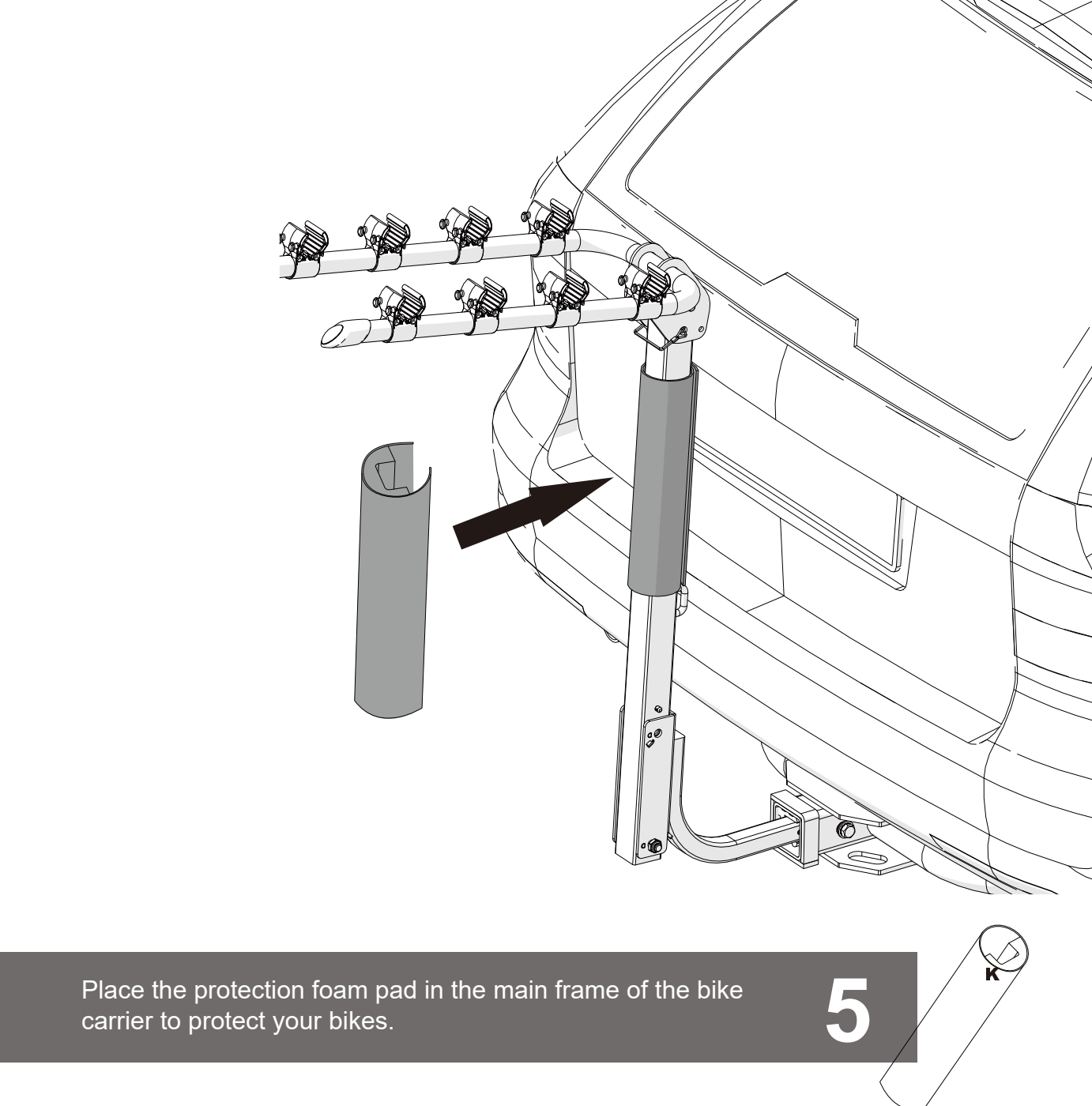
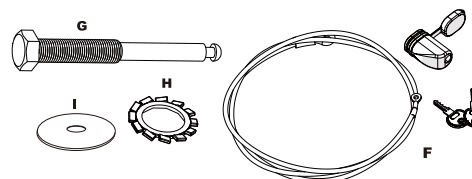


If your receiver size is 1.25", take out the hitch adapter to fit your car.



Secure Hitch rack to the hitch receiver using the security screw.

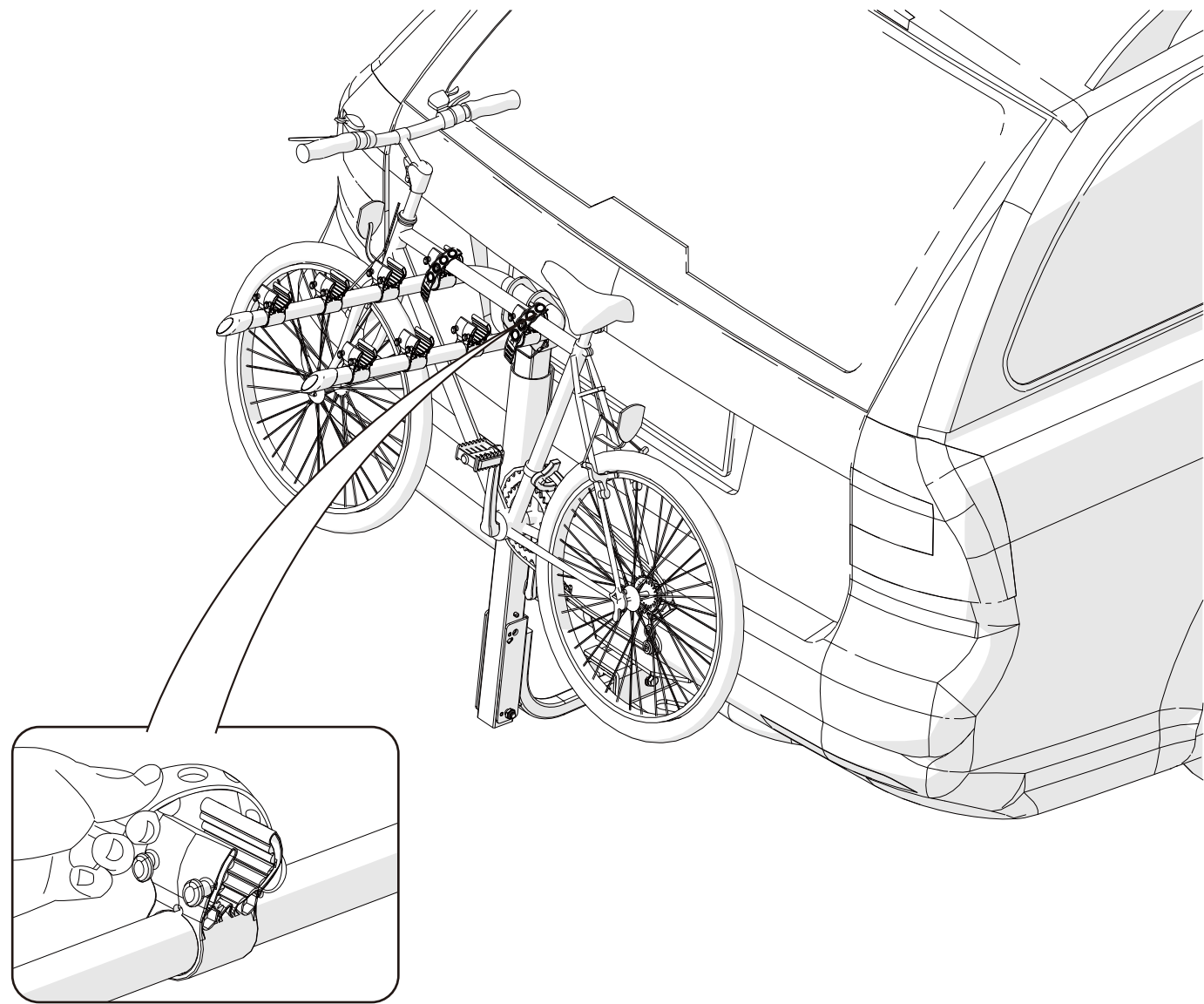
4



Place the protection foam pad in the main frame of the bike carrier to protect your bikes.

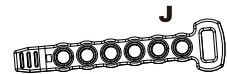
5

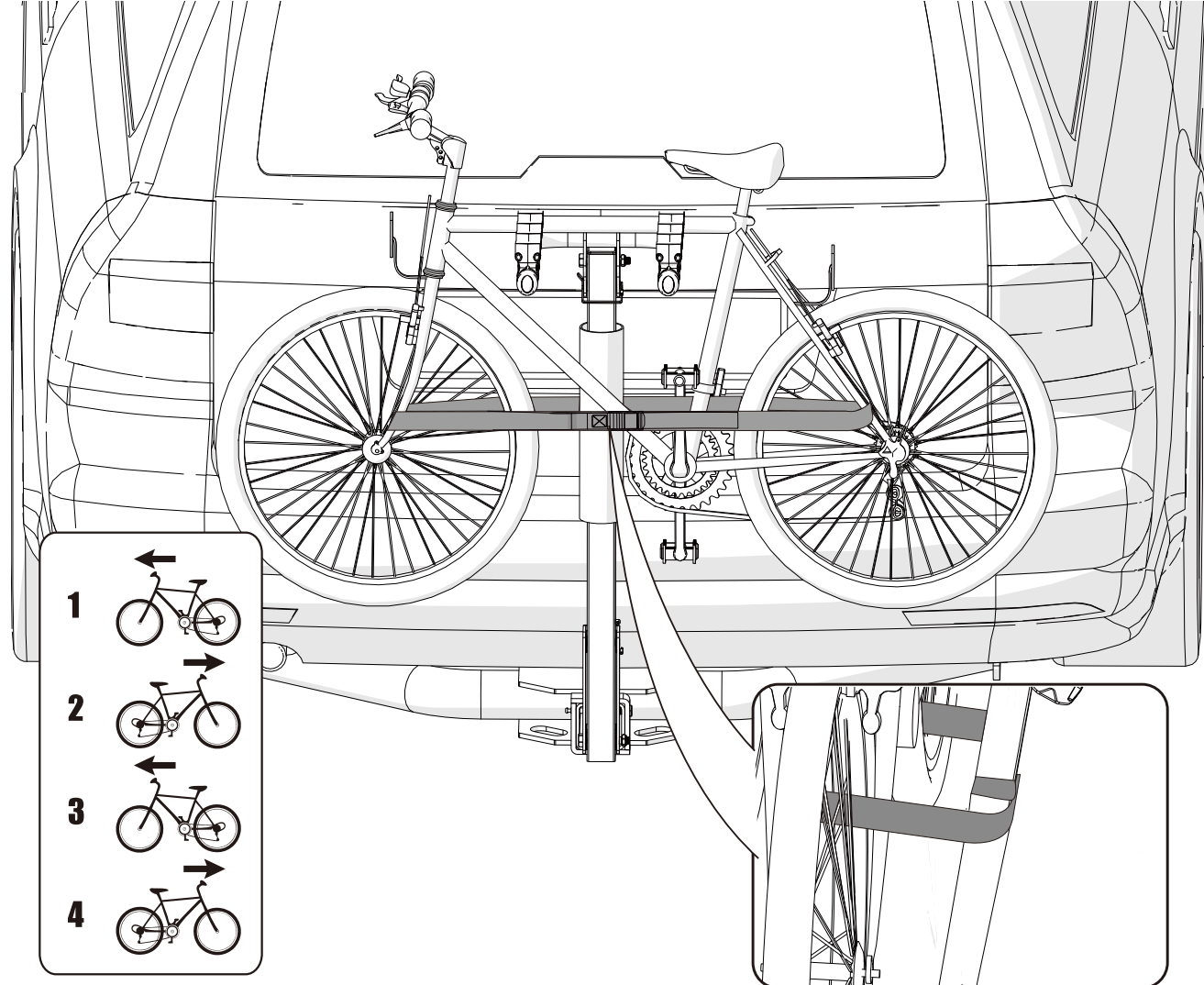
Use the Allen wrench to loosen the bike holder and adjust the angle according to bike placement. Then use the Allen wrench again to tighten the bike holder to fix the angle.



Secure your bike using two rubber straps at the back of your bike and one at the front.

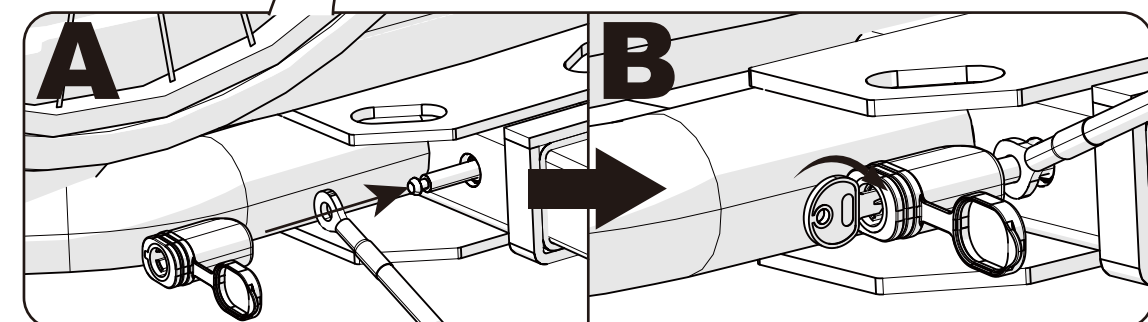
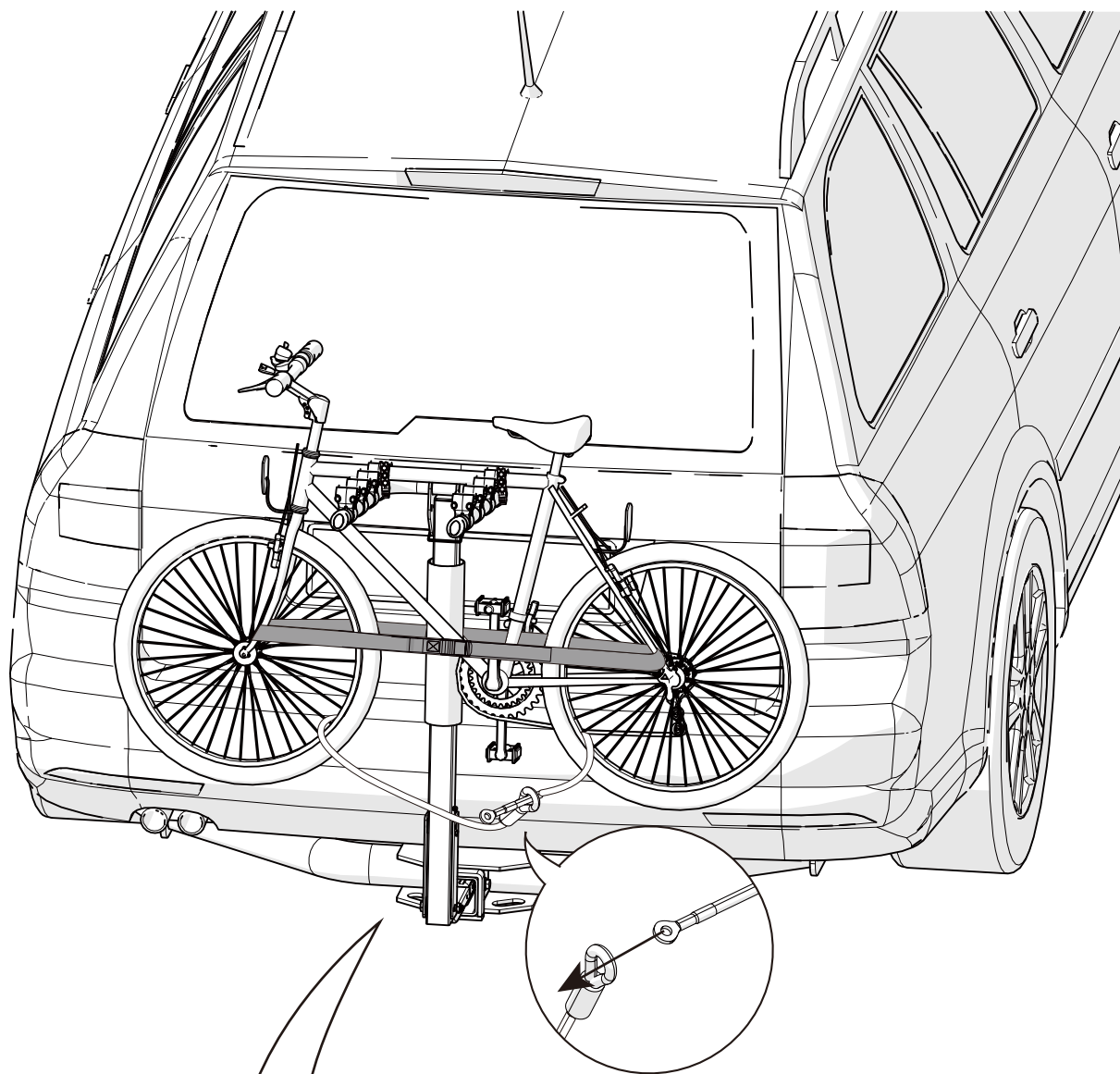
6





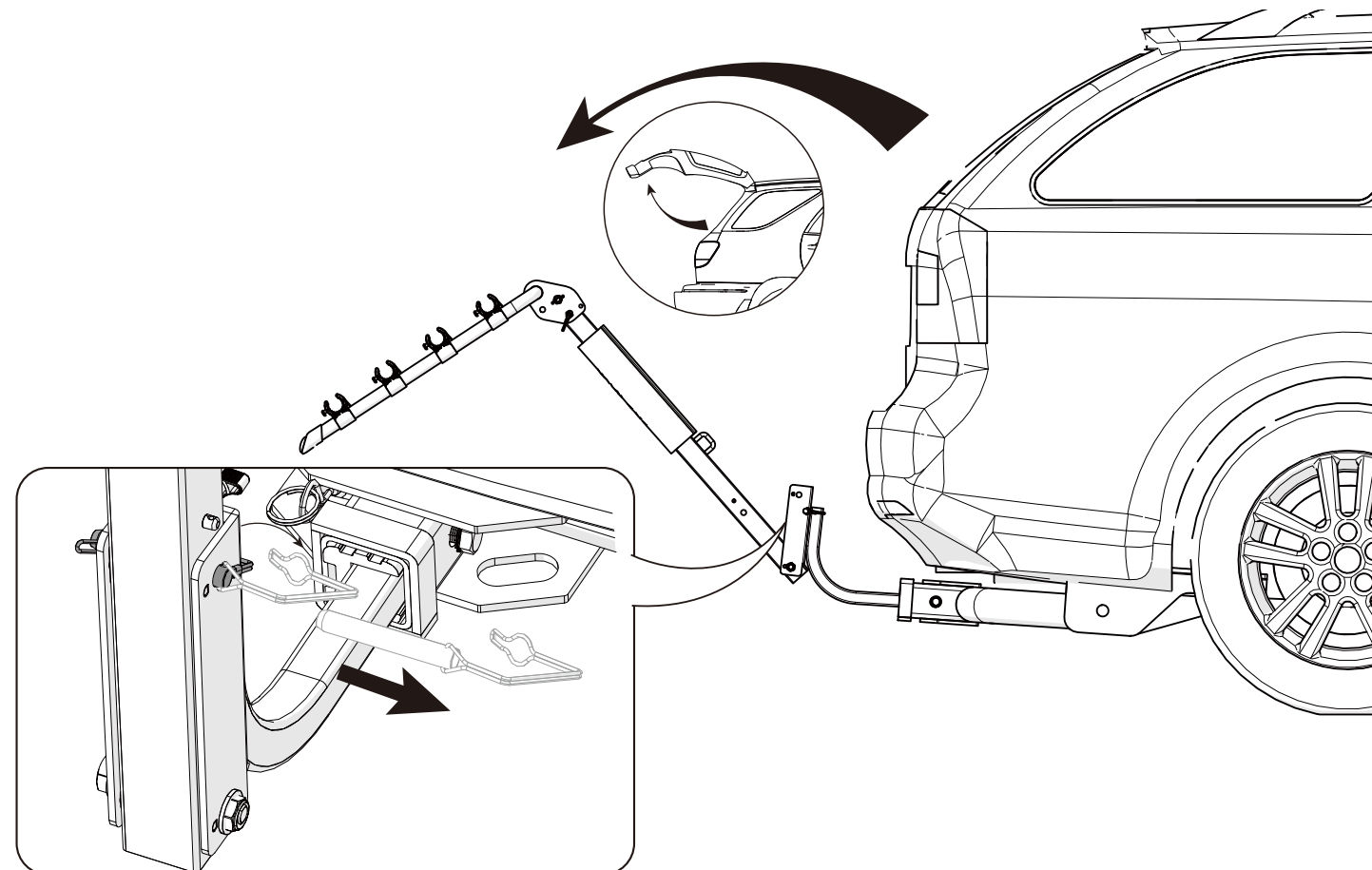
Divide the safety strap to half and make a loop in the frame of Hitch rack. Take the strap forward to secure wheels and frame and tight it firmly.

7



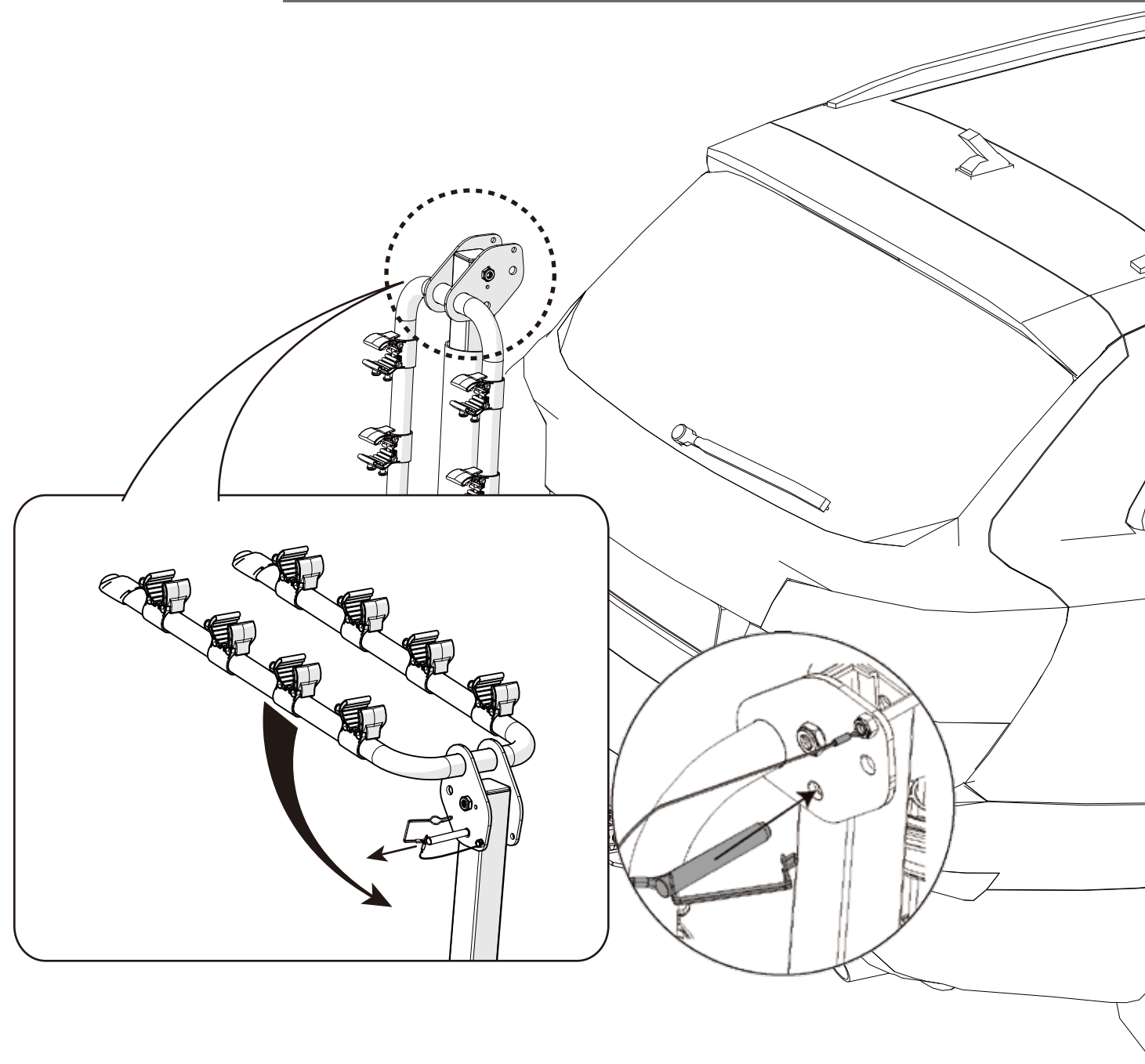
Please apply steel wire lock in assistance of securing the bikes and racks, by installing as per illustration A and B, and lock up.

8



Tilt down the bike carrier by releasing the safety pin from the base.

9



Sporting arm can be folded down by removing the fixing pin.

10

English

General notes for rear bike carrier

* Every month, new cars are brought to market for new design and body. Although BnB Rack's design team strive to make most of products universal to cars in the market, it is impossible for one single bike carrier to fit all models of cars available on the market. Before you purchase the bike carrier, please check if the bike carrier fits your specific vehicle with BnB Rack authorized dealer or distributor.

* Before installation, please read the instruction first then install the bike carrier according to the manual enclosed. Make sure all parts are present and in working condition prior to installation. Any missing or broken parts, please contact your BnB Rack authorized dealer or distributor. Always keep this manual for future reference.

Warnings during fitting of the bike carrier

1. When vehicles are equipped with power tailgate, it is necessary to turn off the power when you install rear bike carrier. If this option is not available, do not use rear bike carrier.
2. Prior to installation, please clean the receiver hitch thoroughly.
3. It is necessary to change installation method of bike carrier when the vehicle is equipped with spoiler or similar items. Please check with your authorized BnB Rack dealer or distributor if this occurs.
4. Please obey the local traffic law when you drive with bike carrier.
5. Please remove the bike carrier if you do not use and before car wash.
6. If the operation of rear wiper interferes with the bike carrier, stop using rear wiper or disable the power of rear wiper.

Warnings during mounting of the bikes

1. When you mount the bikes, please make sure that bikes do not contact the vehicle itself, especially the pedal. Use of protective foam pads may help.
2. Before mounting bicycles, please remove all loose items. Ex., water bottles.
3. Tires of bicycles have to be kept away from vehicle exhaust.
4. Always obey the weight limit of each bicycle (Max. 15kg/35lbs per bike) and capacity of bicycles according to manufacturer's recommendation. Please do not mount recumbent and electric bikes.
5. Vehicles installed with bike carriers/bikes have different road behavior. Drive extreme cautiously during strong wind, sharp turns, and rough road. Drive slowly over the speed bump with the speed less than 10 km/h (6 miles/hr).
6. Vehicles equipped with bike carrier/bikes have extra width and length. In addition, please make sure the bikes are mounted in the center to avoid excessive protrusion.
7. Some bikes like lady bikes require bike beam to mount.
8. When vehicle is equipped with bike carrier, please check the installation of bike carrier and mounting of bikes for every 100km during the journey. It is the responsibility of the driver to ensure the safety of passengers and others!

Important notices regarding to warranty and liability

VENZO Rack disclaims any liability in respect to any damages (to vehicles, cargos, and/or persons) in connection with the purchase, use or handling of this product when the damage was caused by a wrong installation or incorrect use of this product or its accessories.

VENZO
BICYCLE COMPONENT