

QPS 行李架裝配圖

Luggage Rack

Installation Instructions



將扣件(4)往內推,即可移動固定座往外拉則扣住無法移動。
Push in the buckle(4) and move the roofrack holder, the holder cannot be moved if the buckle(4) is pulled out.



調整固定座至車頂適當之定點。
※愈接近車體外側愈佳。
Adjust the roofrack holder to an appropriate point. It'd be better getting the holder closer to the side edge of the car body.



將勾片(8)及墊片(14)、旋鈕(10)依序穿入並旋入扣件(4)中帽桿(5)之螺絲孔中。
Insert the hook(8), washer(14) and knob(10) into the screw hole of the bolt(5) of the buckle(4) in sequence then screw the knob(10) in.



轉動旋鈕,將勾片(8)勾住車體,即完成安裝。
Tighten the knob firmly until the hook plate to hook the car body.
Install completed.

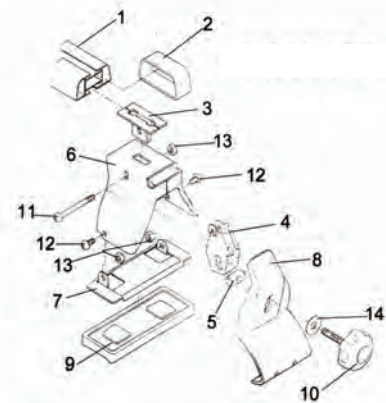


完成圖
Completed photo.

※ 安裝完成後請前後搖動行李架,並確認安裝牢固。

⚠ Please shake the roof rack back and forth in order to check if it is properly installed for security.

NO 編號	DESCRIPTION 規格	NO 編號	DESCRIPTION 規格
1	鋁管 ALUMINUM TUBE	8	鉤片 HOOK PLATE
2	管塞 TUBE COVER	9	腳座膠墊 STAND CUSHION
3	鋁管固定板 TUBE FIXED PLATE	10	旋鈕<含8mm*50mm螺絲> KNOB WITH 8MM*50MM SCREW
4	扣件 BUCKLE	11	6MM*53MM螺絲 6MM*53MM SCREW
5	帽桿 BOLT	12	6MM*12MM螺絲 6MM*12MM SCREW
6	本體 BODY	13	6MM防滑螺帽 6MM/SKID RESISTANCE NUT
7	腳座 STAND PIECE	14	8MM*22MM墊片 8MM*22MM WASHER



※ 本公司非金屬零件因使用環保耐候性材料,故本公司自購買日起免費保固一年。
保固期滿若有老化、龜裂現象產生,本公司皆以優惠價格供應更換,謝謝!
※ Because the nonmetal part is made of hardy weather and environmental protection material.
If it wears out, broken or crack, please kindly contact with dealer to change.